

The logo for Frontier Primary features a stylized human figure in orange and green, with a green swoosh underneath. The text "FRONTIER" is in green and "PRIMARY" is in grey, both in a bold, sans-serif font.

FRONTIER
PRIMARY

Welcome to P1 Orientation 2024

**Confident Thinkers . Adaptable Individuals . Passionate Leaders
Make A Difference . Be The Difference**

Official (Closed) \ Non-Sensitive



Mr Chan Chok Seng
Year Head P1 & P2
Frontier Primary School

**Confident Thinkers . Adaptable Individuals . Passionate Leaders
Make A Difference . Be The Difference**

The screenshot shows the website for Frontier Primary. At the top, there is a navigation menu with links: ABOUT US, OUR PEOPLE, CURRICULUM, CCA, SIGNATURE PROGRAMME, ACCOLADES, MK@FRONTIER, and CONTACT US. The main banner features a large photo of a student, Zhang Han, and a smaller inset photo of her. The text on the banner reads: "Our 3rd Prime Minister's Book Prize Recipient! 2022 Prime Minister's Book Prize (Primary) Recipient ZHANG HAN". Below this, a list of awards is provided: Frontier's PSLE Academic Excellence (2021) recipient, Edusave Character Award (ECHA) (2021) recipient, Frontier's Scholarship Award (2021 - 2020) recipient, and Edusave Award for Achievement, Good Leadership and Service (EAGLES) (2020) recipient. At the bottom of the banner, there are three navigation buttons: "STUDENTS & PARENTS" (circled in red), "TEACHERS", and "ALUMNI".

FRONTIER PRIMARY

ABOUT US ▾ OUR PEOPLE ▾ CURRICULUM ▾ CCA ▾ SIGNATURE PROGRAMME ▾ ACCOLADES ▾ MK@FRONTIER ▾ CONTACT US 🔍

Our 3rd Prime Minister's Book Prize Recipient!

2022 Prime Minister's Book Prize (Primary) Recipient

ZHANG HAN

- Frontier's PSLE Academic Excellence (2021) recipient
- Edusave Character Award (ECHA) (2021) recipient
- Frontier's Scholarship Award (2021 - 2020) recipient
- Edusave Award for Achievement, Good Leadership and Service (EAGLES) (2020) recipient

Current student @Nanyang Girls' High School (Secondary)

STUDENTS & PARENTS
Downloadable Links

TEACHERS
Useful Links

ALUMNI
Information for Alumni

Confident Thinkers • Adaptable Individuals • Passionate Leaders
Make a Difference • Be The Difference

Official (Closed) \ Non-Sensitive

- **Welcome**
- **Principal's Sharing**
- **Parent Partnership Committee**
- **P1 Transition Programme 2024**
- **Administrative Matters**
- **Question & Answer**



Mrs Tonnine Chua, Principal
Frontier Primary School
& MK @ Frontier

**Confident Thinkers . Adaptable Individuals . Passionate Leaders
Make A Difference . Be The Difference**

Preparing for Primary 1



Confident Thinkers • Adaptable Individuals • Passionate Leaders
Make a Difference • Be The Difference

Official (Closed) \ Non-Sensitive

P1 Transition Programme



Confident Thinkers • Adaptable Individuals • Passionate Leaders
Make a Difference • Be The Difference

Official (Closed) \ Non-Sensitive

Programme for Active Learning (PAL)



Confident Thinkers • Adaptable Individuals • Passionate Leaders
Make a Difference • Be The Difference

Official (Closed) \ Non-Sensitive



Confident Thinkers • Adaptable Individuals • Passionate Leaders
Make a Difference • Be The Difference

Official (Closed) \ Non-Sensitive

LLP: DanceFront



Confident Thinkers • Adaptable Individuals • Passionate Leaders
Make a Difference • Be The Difference

Official (Closed) \ Non-Sensitive

Frontopia



Confident Thinkers • Adaptable Individuals • Passionate Leaders
Make a Difference • Be The Difference

Official (Closed) \ Non-Sensitive

iMaker Lab



Confident Thinkers • Adaptable Individuals • Passionate Leaders
Make a Difference • Be The Difference

Official (Closed) \ Non-Sensitive

Frontier Learning Yacht (F.L.Y Room)



Confident Thinkers • Adaptable Individuals • Passionate Leaders
Make a Difference • Be The Difference

Official (Closed) \ Non-Sensitive



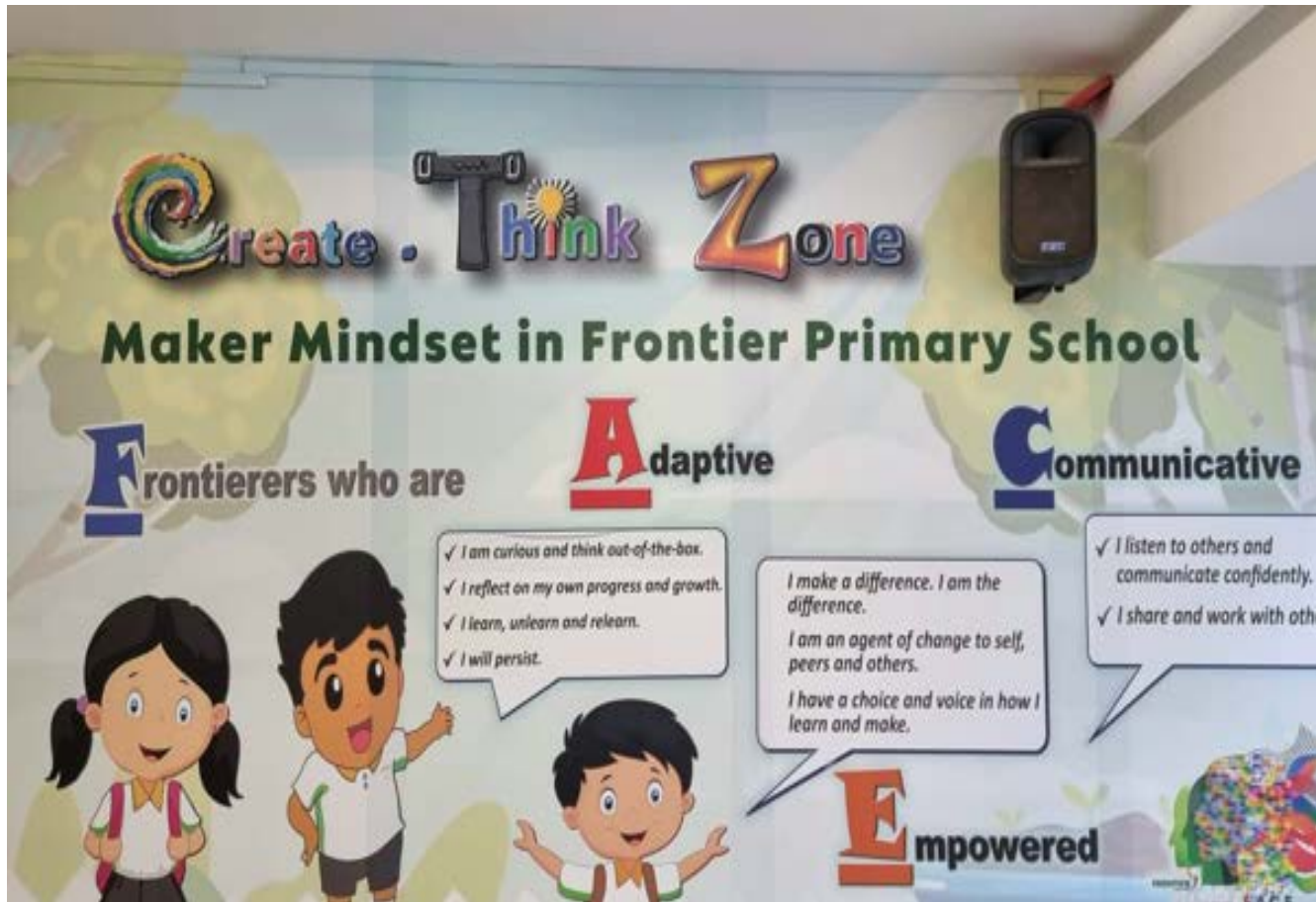
Eco-wonders



Confident Thinkers • Adaptable Individuals • Passionate Leaders
Make a Difference • Be The Difference

Official (Closed) \ Non-Sensitive

Create.Think Zone



Confident Thinkers • Adaptable Individuals • Passionate Leaders
Make a Difference • Be The Difference

Official (Closed) \ Non-Sensitive

Frontier Footprints



Confident Thinkers • Adaptable Individuals • Passionate Leaders
Make a Difference • Be The Difference

Official (Closed) \ Non-Sensitive

What can my child expect in Primary 1

- Big change from kindergarten to primary 1
- New environment: big school building, many classrooms, canteen, toilets and special rooms
- Longer school hours (eg. 7.20am- 1.30pm)
- Different routine, learning subjects at a higher level
- Different approaches to learning (investigative, experimental, role-play, show and tell, think and write, small group/pair discussions, bite-sized assessments)
- Focus is on building strong foundation in literacy and numeracy, developing confidence and communication skills

Confident Thinkers • Adaptable Individuals • Passionate Leaders
Make a Difference • Be The Difference

Official (Closed) \ Non-Sensitive



What can my child expect in Primary 1

- Programme for Active Learning (PAL), Daily Silent Reading, ALP, LLP and CCA
- Exposure to non-academic experiences, discover skills, forge friendships and build ruggedness
- Lessons to help child learn and see value in what they are doing, appreciate life and grow as wholesome persons

Confident Thinkers • Adaptable Individuals • Passionate Leaders
Make a Difference • Be The Difference

Official (Closed) \ Non-Sensitive



Roles of Parents

- Importance of home-school partnerships
- School supports parents in parenting and developing the child
- Parents need to be present, be involved in child's education; when child sees you learning, he will be interested in his learning too
- Importance of reading: child to develop love for reading, parents to read and read regularly to/with your child
- Parents to role model good and proper behaviour

Confident Thinkers • Adaptable Individuals • Passionate Leaders
Make a Difference • Be The Difference

Official (Closed) \ Non-Sensitive



Prepare your child for P1

- **Excite** child with new school and experiences; do not frighten him with remarks like “teacher will punish you” or “your friends will laugh at you”
- Talk to child about new routines eg. Longer school hours, different learning styles instead of playing all the time
- Help child understand new expectations eg.
 1. Being punctual for school
 2. Keeping quiet during silent reading
 3. Keeping quiet when teacher is talking
 4. Packing own bag and completing homework daily

Preparing your child for P1

- **Enable** your child by teaching him/her about managing money and concept of buying food eg. Coins and dollar notes
- Ensure that child is toilet-trained
- Child should know how to change in and out of school attire, tie shoe laces etc
- Make sure that child's belongings are labelled with his name; teach him to be responsible for his things, may buy hook to be attached to wallet and pocket; bags with wheels are not allowed
- If child takes late morning naps, important to ease him out of such naps

Supporting your child for P1

- **Empower** your child by developing a routine for school and homework
- Teach child to be self-disciplined
- Share with child on how to get along with others
- Parents to understand that child may need adjustment period (eg. losing things, not able to get along with others, not coping with school work, trip and fall) and not be too upset
- Continue to support and coach him, communicating with teachers and support staff, do not be impatient and expect quick results, help your child to share with you honestly
- Continue believing in child and let him enjoy his school experiences

Confident Thinkers • Adaptable Individuals • Passionate Leaders
Make a Difference • Be The Difference

Official (Closed) \ Non-Sensitive



Working with Frontier to support your child in P1

- **Entrust** your child with us: Adopt a POSITIVE mindset about the school and its teachers
- Allow teachers some response time and respect teachers' off-work hours
- Have faith that your child's teacher tries to ensure your child's welfare always
- **Together we work to nurture and look after our children**

Confident Thinkers • Adaptable Individuals • Passionate Leaders
Make a Difference • Be The Difference

Official (Closed) \ Non-Sensitive



Parent's Involvement in P1 Transition

- 1) Talk and ask them daily about the “happenings” in school.
 - Ask “what happened?” and “how can you do it better?” rather than “who pushed you?” and “who bullied you?”.

- 2) Support and work closely with the school.
 - Be polite when giving feedback or making request with teacher
 - Be courteous and patient when you call up school or Form Teacher
 - Remember you are your child's mirror

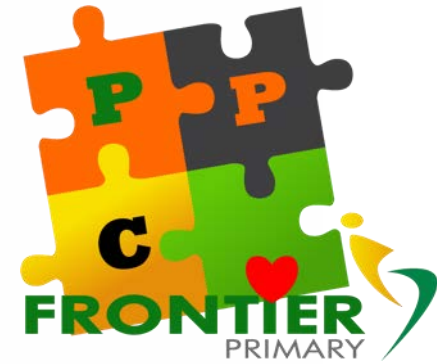
Thank You

Confident Thinkers • Adaptable Individuals • Passionate Leaders
Make a Difference • Be The Difference

Official (Closed) \ Non-Sensitive



Parent Partnership Community (PPC)



Confident Thinkers • Adaptable Individuals • Passionate Leaders
Make a Difference • Be The Difference

Official (Closed) \ Non-Sensitive



Who are we?

The PPC serves in multiple roles to support the school's efforts to educate and care for our students and it is built to be a strong parental collaboration between the School, Parents and Students.



Confident Thinkers • Adaptable Individuals • Passionate Leaders
Make a Difference • Be The Difference

Official (Closed) \ Non-Sensitive

What do we do?

In collaboration with Frontier Primary School

- CNY Decorations
- Teacher's Day Hall Decoration
- Teacher's Day Celebration
- Children's Day Hall Decoration
- Learning Journeys
- NAPFA Test P4 & P6
- Swimsafer

Organised Parent Partnership Community

- CNY Fund Raising
- Annual General Meeting
- P6 Motivation Pack
- Teachers' Day Breakfast
- Children's Day Game Booths

Confident Thinkers • Adaptable Individuals • Passionate Leaders
Make a Difference • Be The Difference

Official (Closed) \ Non-Sensitive



Chinese New Year Fund Raising



Confident Thinkers • Adaptable Individuals • Passionate Leaders
Make a Difference • Be The Difference

Official (Closed) \ Non-Sensitive

P6 Motivation Pack



Confident Thinkers • Adaptable Individuals • Passionate Leaders
Make a Difference • Be The Difference

Official (Closed) \ Non-Sensitive

Children's Day Celebration



Confident Thinkers • Adaptable Individuals • Passionate Leaders
Make a Difference • Be The Difference

Official (Closed) \ Non-Sensitive

PARENT PARTNERSHIP COMMUNITY 2023 EXECUTIVE COMMITTEE



Chairman
Mdm Phua Pek Lin



Vice-Chairman & Treasurer
Mdm Edna Wong



Outreach Lead
Mr Cheok Kai Weei



Outreach Lead
Mdm Rachel Ng



Events Lead
Mdm Stacey Lwin



Membership Lead
Mdm Suneetha
Gudipalli

Confident Thinkers • Adaptable Individuals • Passionate Leaders
Make a Difference • Be The Difference

Official (Closed) \ Non-Sensitive

How can you help and join us?

<https://frontierpri.moe.edu.sg/parent-partnership/>

We welcome you!

FROM ALL OF US AT FPS PPC



Confident Thinkers • Adaptable Individuals • Passionate Leaders
Make a Difference • Be The Difference

Official (Closed) \ Non-Sensitive

Thank You

Confident Thinkers • Adaptable Individuals • Passionate Leaders
Make a Difference • Be The Difference

Official (Closed) \ Non-Sensitive



1. P1 Transition Programme

2. P1 Day to Day Routines

P1 Transition Programme

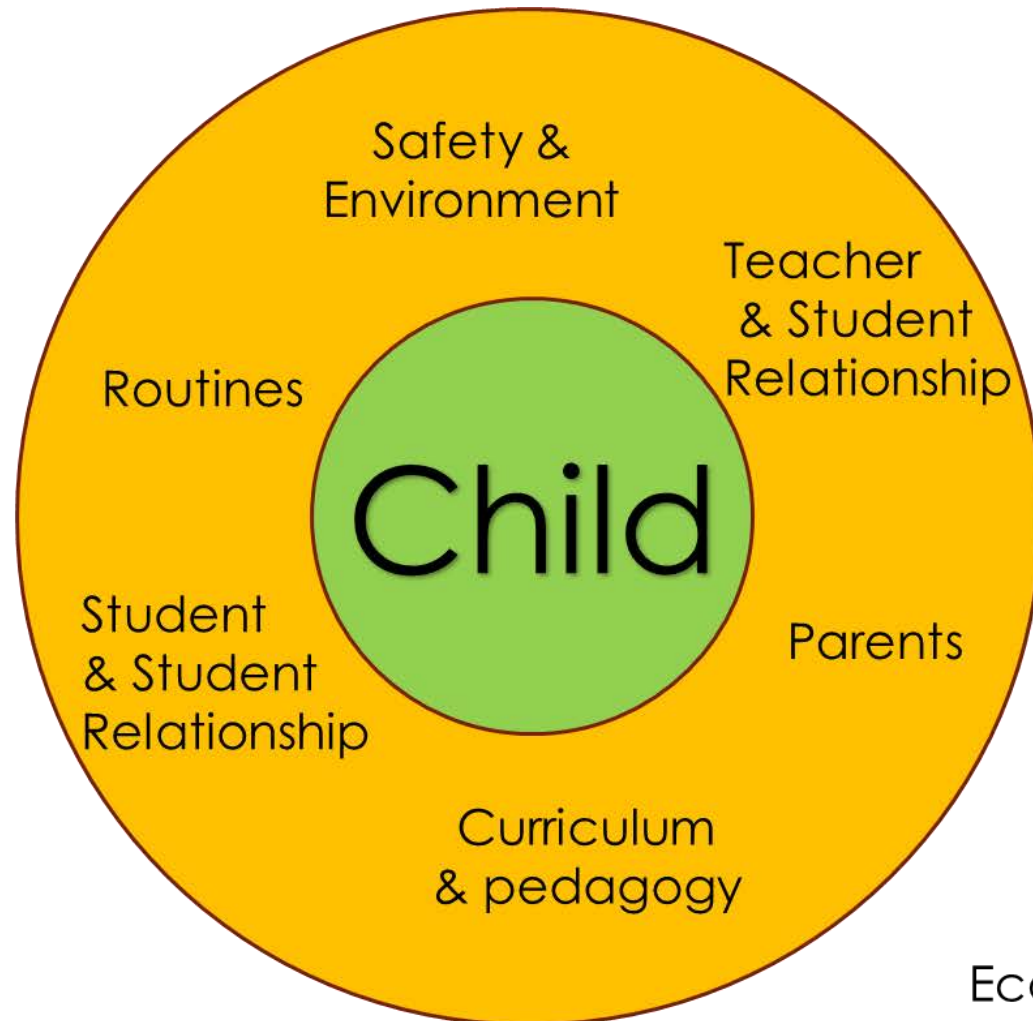
The P1 Transition Programme aims to provide a **smoother transition** for our P1 students from pre-school to primary school.

- equip our students with the **knowledge, skills and dispositions**
- enable the P1 students to gain **confidence** and build a **strong foundation** to begin their life in the new school.



Confident Thinkers • Adaptable Individuals • Passionate Leaders
Make a Difference • Be The Difference

Official (Closed) \ Non-Sensitive



Bronfenbrenner
Ecological Framework

Confident Thinkers • Adaptable Individuals • Passionate Leaders
Make a Difference • Be The Difference

Official (Closed) \ Non-Sensitive

Joy of learning

- Customised curriculum

Joy of quality relationship

- Peer interaction
- Teacher and Student interaction

Joy of success in learning

- Skills, Knowledge & Disposition



Confident Thinkers • Adaptable Individuals • Passionate Leaders
Make a Difference • Be The Difference

P1 Transition Programme (Orientation)

School Tour

- Frequented parts of the school

Activities to get to know each other

- Teachers
- Classmates

School expectations and routines

Eg. National Anthem, classroom and recess routines



Confident Thinkers • Adaptable Individuals • Passionate Leaders
Make a Difference • Be The Difference

Official (Closed) \ Non-Sensitive

Executive Functioning Skills

- Organisation
- Impulse Control
- Self-Regulation
- Planning



Confident Thinkers • Adaptable Individuals • Passionate Leaders
Make a Difference • Be The Difference

Official (Closed) \ Non-Sensitive

First 4 days of School

Reporting Time

	Tue (2 Jan)	Wed (3 Jan)	Thu (4 Jan)	Fri (5 Jan)
P1	8.30am	8.30am	8.30am	8.30am

Dismissal Time

	Tue (2 Jan)	Wed (3 Jan)	Thu (4 Jan)	Fri (5 Jan)
P1	1.00pm	1.00pm	1.00pm	1.00pm

Confident Thinkers • Adaptable Individuals • Passionate Leaders
Make a Difference • Be The Difference

Entry & Dismissal on Day 1



GATE A
(along St 61) Leads to
the classroom block

GATE B
(along St 63)
Leads to
canteen

**No Parking
Available**
in school.
Please park at
nearest HDB Car
park, if
necessary

Confident Thinkers • Adaptable Individuals • Passionate Leaders
Make a Difference • Be The Difference

Official (Closed) \ Non-Sensitive

P1 Parent Engagement

- 8.30am to 10.00am at the School Hall
- Important information will be shared

Recess

- 10.00am
- Parents are allowed into the canteen

Dismissal

- Pick up your child at the respective gates at 1.00pm
- Students will be led by the teachers to the School bus and Student Care Centres (School based or External)

Dismissal Points

- Gate A or Gate B for pick-up by 1.30pm
- Foyer: Students going home by **school bus** and attending **external student care centres.**
- School buses will leave at **1.40pm** daily.
Do expect delays on the first few days.
- **In-house** Student Care
Teachers will lead the students to the centre for the 1st month.



Confident Thinkers • Adaptable Individuals • Passionate Leaders
Make a Difference • Be The Difference

Official (Closed) \ Non-Sensitive

First Day of School: Lanyard

Front

CHLOE CHERN
1 RESPECT 2

Back

Dismissal detail:
Gate A Gate B
Raffles Student Care
Foyer:
External Student Care
Name of Centre _____
School Bus

Primary 1 students must wear their lanyards for the first month of school

Confident Thinkers • Adaptable Individuals • Passionate Leaders
Make a Difference • Be The Difference

Official (Closed) \ Non-Sensitive

P1 Transition Programme T-shirt



P1 students will **only** need to wear this T-Shirt on

- First day of school (2nd Jan)
- P1 Transition Graduation Day (26 Jan)
- Learning Journeys
- National Day
- Lower Primary Games Day

Confident Thinkers • Adaptable Individuals • Passionate Leaders
Make a Difference • Be The Difference

Official (Closed) \ Non-Sensitive

Things to Bring (Day 1 and 2)

- Pencil Case (Stationery)
- Set of Coloured Pencils
- A Storybook
- Snacks for snack break



Confident Thinkers • Adaptable Individuals • Passionate Leaders
Make a Difference • Be The Difference

Official (Closed) \ Non-Sensitive

What to Bring (Day 3 onwards)

- Your child's form teacher will inform you on what books to bring after the third day of school.
- Do label the books and pack your child's bag according to the schedule given.

- For safety reasons, students are strongly discouraged from carrying trolley bags.
- Carry bags up and down the staircase.
- Help your child get organised



Week 2 onwards:

**All students should be in school
by 7.20am**

- Flag raising: 7.30am
- Silent Reading:
7.10am to 7.30am

Level	No of Classes
Primary 1	7
Primary 2	7
Primary 3	6
Primary 4	6
Primary 5	6
Primary 6	6

SCHOOL HOURS FOR P1 (Week 2 Onwards)

Day	From	To
Monday to Friday	7.30am (Be in school by 7.20am)	1.30pm
Recess	9.30am to 10.00am	
Snack Break	12.00am to 12.10am	

- 30 minutes at the canteen
 - P4 to Buddy P1 for first 3 days
 - Prepare \$2 - \$3 (coins or coins and dollar notes) per day to buy food or
 - Can pack food from home as another option
-
- Menu is posted in the school website
 - Cash payment
 - Try out “recess time” at home!



Snack Break

- 10 minutes snack time in the classroom
- Prepare a simple dry snack eg. bread, biscuits, fruits
- No sugared drinks, milk or Milo



Confident Thinkers • Adaptable Individuals • Passionate Leaders
Make a Difference • Be The Difference

Official (Closed) \ Non-Sensitive

School Uniform

- All students will wear the uniform as shown.
- The T-shirt is to be tucked in.
- Wear only black canvas shoes with only black laces & plain white socks.



Confident Thinkers • Adaptable Individuals • Passionate Leaders
Make a Difference • Be The Difference

Official (Closed) \ Non-Sensitive

Personal Grooming



Confident Thinkers • Adaptable Individuals • Passionate Leaders
Make a Difference • Be The Difference

Official (Closed) \ Non-Sensitive

School Uniform: Name Tag

- Purchase from bookshop
- Collection during Transition Programme in class



Confident Thinkers • Adaptable Individuals • Passionate Leaders
Make a Difference • Be The Difference

Official (Closed) \ Non-Sensitive

Personal Grooming

- Boys should keep their hair short and neat. **Fanciful haircuts** are not allowed.
- Girls with long hair should tie it up neatly with **black** elastic bands or hairclips. Fanciful bands and hairclips are not allowed.
- Girls with earrings, only **simple studs** (gold, silver or black) are allowed.



Environmental Safety

- A safe school enables a good quality of school experience.

Road Safety

- **Before school:** Parents will be able to drive in and alight the students at the foyer when they send them to school in the morning.
- **After school:** Parents will only be allowed to drive into the school to pick their children after the school buses have left. **Approximate waiting time is about 20 minutes after school dismissal.**

General Safety

- All visitors (including parents) need to **report to Security Post when entering the school.**
- Upon entry into school, visitors are to **proceed directly to the General Office.** Visitors & parents are not permitted to go to the classrooms or other areas of the school.
- Parents who intend to meet teachers should **make prior appointments.**

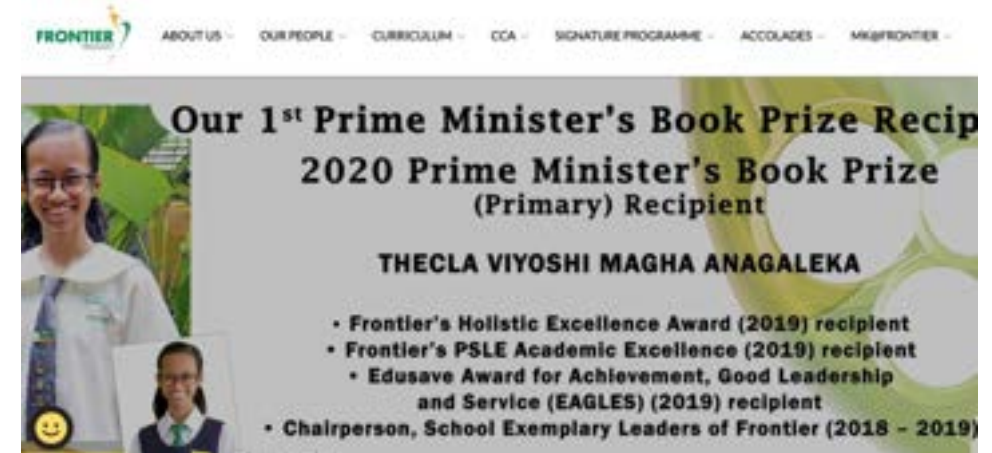
STUDENT SAFETY IS OUR TOP PRIORITY

- If parents need to bring the child home before dismissal time due to valid reasons (e.g. Child is unwell.), they will need to fill in the “**Early Exit Form**” at the General Office. For the child’s safety, only authorised family members above 18, domestic helpers and legal guardian will be allowed to bring the child home.

Students' Absence

- Your child's absence from school must be supported with valid documents (e.g. Medical Certificates or Parents' Letter).
- It is to be produced on the day following the absence. (Please note that it is our school policy for teachers to contact you if your child is absent to find out the reason for his/her absence.)
- Inform the Form Teacher in advance if your child will be absent from school for more than two days.

- iN-Touch
- School Website
- Parents Gateway
- Student's Handbook
- Email
- General Office



Confident Thinkers • Adaptable Individuals • Passionate Leaders
Make a Difference • Be The Difference

Official (Closed) \ Non-Sensitive

PARENT-CHILD ACTIVITY BOOK IS AVAILABLE ONLINE!

PARENT-CHILD ACTIVITY BOOK (DIGITAL)

10 TIPS FOR PARENTS to help you navigate your child's first year in primary school.



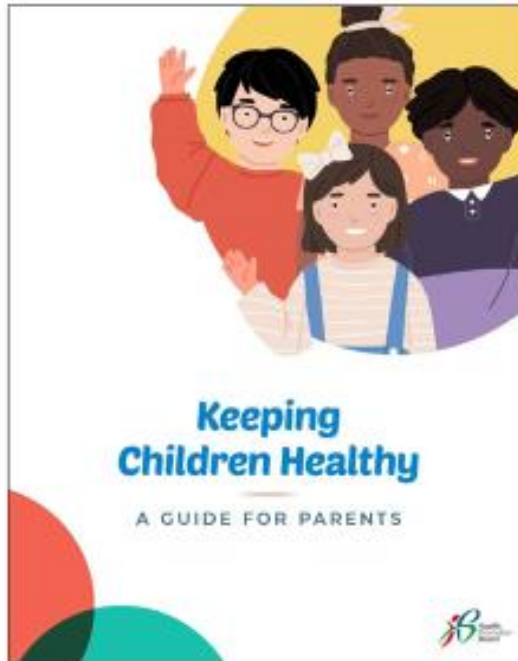
- Chat with your child
- Boost their confidence
- Practise various scenarios
- Create something interesting
- Thank others for their help
- Pledge to do things together



WE ARE HERE TO SUPPORT YOU!



KEEPING CHILDREN HEALTHY – A GUIDE FOR PARENTS



Edition 1



Edition 2



Edition 3

- By the first week of school, we will provide **all parents with the contact details of the** temporary Form Teacher (through FT letter) & subject teachers (indicated in Student Handbook)
- The school will look again into the **Class Dynamics** and may make amendments, if necessary, within the month of January.

P1 Transition Graduation Day & Teacher – Parent Engagement

Date: Friday, 26 January 2024

Time: 12.00pm to 1.30pm

Venue: P1 Classroom

- **1 Parent** to attend this session
- Snack time with Parents
- Graduation Performance
- Certificate Presentation
- Affirmation by Parents
- Teacher – Parent Engagement
- Dismissal

Confident Thinkers • Adaptable Individuals • Passionate Leaders
Make a Difference • Be The Difference

Official (Closed) \ Non-Sensitive



Parents are required to complete the following administrative tasks by **28 Dec 2023**:

Task	Details
Apply for GIRO	Information sent via PG on 3 Nov
Set up Edusave Standing Order <i>(for Singapore Citizen children)</i>	Information sent via PG on 3 Nov
Purchase Books & Uniform	Information sent via PG on 8 Nov
Complete Student Details Form	Information will be sent via PG by 27 Nov



<https://go.gov.sg/fpsp1>

Confident Thinkers • Adaptable Individuals • Passionate Leaders
Make a Difference • Be The Difference

Official (Closed) \ Non-Sensitive

Q & A

Confident Thinkers • Adaptable Individuals • Passionate Leaders
Make a Difference • Be The Difference

Official (Closed) \ Non-Sensitive