

January 2013



Principal's Foreword

"We want our pupils to be holistically developed and have a strong sense of integrity."

Dear Parents/Guardians

This year, we receive our second batch of Frontierers. As educators, we are excited about receiving the new Frontierers as much as we are seeing the pioneer batch go on to P2. The joys and triumphs of teaching are found in things like hearing our pupils read their first words, introducing pupils to interests that stay with them for the rest of their lives, and finding ways to connect children's learning to their languages and cultures.

"Strong Fundamentals, Future Learning" is the principle that guides our learning framework in Frontier Primary School; what anchor us are our fundamentals. We believe that when our teachers engage pupils in class subjects come alive. We are clear that we want our pupils to be grounded with strong fundamentals so that they are ready for future learning. We want our pupils to be holistically developed and have a strong sense of integrity. **CLAPS** will guide the school to achieve these pupil outcomes.

CLAPS is:

i. **Cognitive Pursuits**

We want our pupils to possess strong fundamentals in literacy and numeracy

ii. **Leadership Practices**

We want every Child to be given responsibility so that they can practice to be a leader

iii. **Aesthetics Passion**

We want our pupils to be confident and inculcate a cultured perspective

iv. **PERI Programmes**

We want our pupils to be holistically developed through the array of PERI programmes such as PAL and sports

v. **Socio-emotional Well-being**

We want our pupils to have strong self-concept by developing their socio-emotional learning competencies.

To achieve these, the school needs to be a community of collaboration and trust with parents and stakeholders. Let us work together to make this vision a reality in Frontier. Together, we can take collective responsibility for developing our children holistically.

Koh Chin Thong, Martin
Principal



Road Safety Matters

We have noted feedback about road safety on the roads that our pupils use in our surrounding areas. The school has engaged LTA to assist in ensuring that our roads are safe when the pupils go to school, or when they go home after school.

We have given feedback to LTA that vehicles are speeding on Jurong West Street 61. LTA has already put up a school zone sign which reminds motorists that there is a school nearby and vehicles are to be driven at slow speed. The road surface is also painted in red to indicate to motorists that they are in the school zone and extra precautions are to be taken on pedestrian crossing, especially for children. The school will request to LTA if stripes could be laid to ensure that vehicles slow down when they reach the school zone. We will remind our pupils about fostering good road safety habits and to be careful when crossing in the traffic light even when they have the right of way.

The school has also requested for Jurong West Street 63 to be designated as a school zone. LTA has replied that putting up school zone signs at this location would aggravate the traffic congestion as motorists are required to drive at a slow speed. Nevertheless, they will monitor the situation and act accordingly if the situation necessitates it.

Parents who are driving to pick the children are reminded to observe traffic rules. Please do not obstruct traffic. The usual traffic rules regarding parking near a junction, a fire hydrant, a road bend and the entrance and exit to a building have to be observed as the Traffic Police do patrol the roads regularly. We request all parents to follow the instructions given by our security guards and parent volunteers on duty to ensure the smooth flow of traffic.

We also like to announce that LTA has responded to our request to build shelter leading from the school Gate B to the bus stop at Street 63. Works have already begun. We will work with LTA to ensure that while construction is being done, the area is still accessible to pupils and parents. We would appreciate your patience and inconvenience as the works continue. When the project is finally completed, our pupils will be the chief beneficiaries as they now have this shelter.



Safety and Security

With a sprawling campus that is occupied by young children, the school will take measures to step up the safety and security of the premise. All visitors are required to report at the security counter located outside the general office. While we welcome parents to visit the school, we would appreciate it if they refrain from bringing textbooks, files, water bottles, stationery etc. for the pupils during school hours as this will make it difficult for us to deter unauthorized persons from entering the school compound. We also hope to inculcate in pupils a sense of responsibility by packing their school bags and checking their belongings before they come to school. This routine will also help them to build a positive work attitude.

School Rules and Regulations

We have taken time to explain school rules and regulations to the children. The rules and regulations can be found in the Pupil Handbook. We encourage parents to go through the rules with the children as well. We also take this opportunity to remind pupils of the following rules:

- I. The shirt should be tucked into the shorts or skirts at all times.
- II. The name tags must be securely ironed and stitched on the top left (above the logo) of the school shirt.
- III. All pupils must keep their hair neat in its natural colour.

For boys, hair must be above the eyebrows, ears and at least 3 cm above the collar. For girls, the fringe covering the eyebrows is to be pinned up and hair beyond shoulder-length is to be tied neatly. Hair accessories should be black.

Frontieritude - Programme for Active Learning (P.A.L.)

Our Programme for Active Learning (PAL) starts officially this year. We have a wide range of interesting and engaging PAL modules planned for our pupils. The PAL schedule and module objectives are shown below for your information and reference. To have a better understanding of PAL at Frontier Primary School, you can also go to our school website under *Our Key Programmes*.

Level/Term	Term 1	Term 2	Term 3	Term 4
Pri One (8 Classes)	eLF – Leadership Training	Jump In & Ballin’ Fun (All Pri 1 Classes)	SCATA (1Ry, 1Rt, 1Re, 1Co) DaMo (1Ca, 1Cr, 1In, 1Jo)	SCATA (1Ca, 1Cr, 1In, 1Jo) DaMo (1Ry, 1Rt, 1Re, 1Co)
Pri Two (8 classes)	Art Alive! (2Ry, 2Rt, 2Re, 2Co) RhyMo (2Ca, 2Cr, 2In, 2Jo)	Art Alive! (2Ca, 2Cr, 2In, 2Jo) RhyMo (2Ry, 2Rt, 2Re, 2Co)	Senses In Exploration (SE) (All Pri 2 classes)	English Language & Mother Tongue Language Activities

P1 Enrichment Modules during PAL periods

A series of enrichment modules has been planned for P1 pupils in Term 1. They are 'eLF Training' and 'Fun with Photography'. The 'eLF Training' module provides our pupils with the very basics of leadership skills whilst the 'Fun with Photography' (FwP) module (part of the school's Digital Lifeskill Programme) helps our pupils pick up basic photography skills and enjoy the photo-taking experience.

For the FwP module, two pupils will be sharing a camera and each will be responsible for the camera and its safety when it is in their hands. Pupils have been told that they would have to bear the cost of any damage to the camera if they do not practise the safety rules taught in class.

We have started our first session for both modules on 21 January 2013. We encourage parents talk to your children about these modules during your family time and help the pupils practise their photography skills at home.

The modules are scheduled as follows:

Dates	Modules / Classes
21/1, 28/1, 4/2, 18/2 (11/2 – CNY Hol)	<u>eLF Training</u> Classes: 1RY, 1RT, 1RE, 1CO <u>Fun with Photography</u> Classes: 1CA, 1CR, 1IN, 1JO
25/2, 4/3, 11/3, 25/3 (18/3 – Mar Hol)	<u>eLF Training</u> Classes: 1CA, 1CR, 1IN, 1JO <u>Fun with Photography</u> Classes: 1RY, 1RT, 1RE, 1CO





P.A.L. Synopsis

Level	Domain	Modules	Objectives
Pri One	Sports & Games	Jump In & Ballin' Fun	<p>Jump In - Enjoy fun activities with skipping ropes. Develop good loco motor skills as well as good hand, leg and eye coordination. Build team dynamics as they work in pairs or in a group</p> <p>Ballin'Fun – Enjoy fun activities that will increase their awareness of time. Experience situations which require them to be self-motivated in completing tasks and managing their impulses. Work together with their group members during games and learn sportsmanship. Provides opportunity for Social Emotional Learning.</p>
	Visual Arts	SCATA (Stories Come Alive Thru Art)	Gain creative insight through the development of visual perception and combined usage of fine motor and multimedia skills. Produce an illustration with the use of clay modelling, using a STELLAR SBA book story. Creation process will enable students to confidently extend their creativity into physical and illusionary space. Provides opportunity for Social Emotional Learning.
	Performing Arts	DaMo (Dance & Movement)	Heightens pupils' awareness and interest in dance. Takes pupils through a kinetic, creative, intellectual and social experience. Pupils will understand the meanings behind various dance steps and appreciate the cultural significance of dances and moves learnt. Engages pupils in the technical, spatial, dynamic and rhythmic domain. Provides opportunity for Social Emotional Learning.



Level	Domain	Modules	Objectives
Pri Two	Outdoor Education	Senses In Exploration (SE)	Cultivate an appreciation for nature and a caring spirit. Develops pupils' character, leadership and 21 st Century Competencies Provides platform for enjoyment in learning outside the classroom. It is inter-disciplinary. Includes photography, outdoor experiential learning & leadership development. Provides opportunity for Social Emotional Learning.
	Visual Arts	Art Alive!	Provides opportunity to dabble, explore and experiment with paint. Encourages creativity in a more open and non-restricted environment. Provides platform for artistic expressions and productions. Provides opportunity for Social Emotional Learning.
	Performing Arts	RhyMo (Rhythm & Movement)	Introduces a new, unique tuned percussion instrument; the Boomwhacker. Develops a musical sense through fundamental concepts in rhythm, harmony, pitch and melody. Instils the joy of music-making. Provides platform for musical expressions. Provides opportunity for Social Emotional Learning.



Reporting to School

We like to remind parents that pupils are to report to school and be seated in the designated area before 7.45 am. This is to ensure that the pupils are able to benefit from all the pre-assembly programmes and they are able to hear the important announcements made. We have also noted some children arriving in school very early. We strongly advise parents to send your children to school between **7.30am and 7.45am**. Teachers are deployed to take care of the children from 7.30am. It is not advisable for the children to arrive in school earlier than 7.30am as it may also still be dark at that time.

Communication Platforms

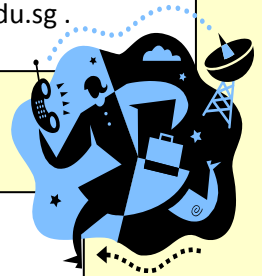
The school has several platforms to provide parents with regular information. The platforms include our monthly in-Touch, letters and social media such as blogs and Facebook. We would like to encourage you to get to know what your children are doing through social media. The Facebook address is <https://www.facebook.com/frontier.primary> and the blog is <http://fpsclassof2017.blogspot.sg/>.

These 2 social media platforms will serve to inform parents and stakeholders of the education journey of all our pupils, with interactive features which parents may want to take advantage of.

If there are official matters pertaining to your child specifically, please do not use the social media platforms but contact via telephone (65789555) or email the teachers directly. The teachers' contact details can be found on the school webpage at <http://www.frontierpri.moe.edu.sg/people-a-programms/staff-information>. If there is a need to contact the school directly, please email frontier_ps@moe.edu.sg.

Students' Accident Protection Scheme 2013

As part of the Pupils' Well-being programme, the school has arranged for an insurance policy to insure our pupils against accidents. A hard copy of a summary of the insurance policy has already been provided to all pupils. In the event of any queries or claims, the pupil can contact AB Lim Pte Ltd directly via: On Line reporting or download a copy of the claim form at www.ablim.com.sg.



Chinese New Year 2013

The school will be celebrating the Chinese New Year 2013 on 8 February 2013. Pupils will be encouraged to wear their Chinese traditional costume (with black school shoes) that day. If they do not have any traditional Chinese costumes, pupils will come to school in the normal school attire. School hours will be normal on Friday, 8 February 2013. There will not be any half day as 8 Feb is not the eve of the Chinese New Year. On 8 Feb 2013, lessons will run as per timetable from 8.00am - 11.00am. Pupils are to pack their bags according to the timetable from 8.00am to 11.00am. From 11.00am, pupils will be engaged in the various activities planned by the school to celebrate the Chinese New Year.

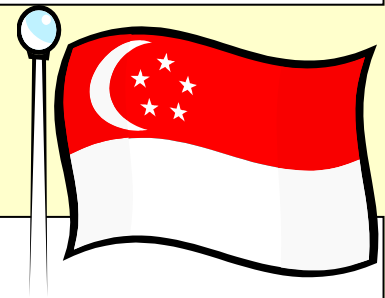
Pupils will return to school on Wednesday, 13 February 2013.

**Trekathon 2013**

The school will be organising a Trekathon for all staff members on 3 June 2013 to raise funds for the following objectives:

- I. Support pupils' participation in enrichment programmes that contribute to their holistic development.
- II. Support needy pupils so that they are able to partake in all aspects of the education that we provide in Frontier Primary School.

All pupils will be given a donation card in the first week of February 2013. We would like to encourage all parents to donate generously to this cause. We will be collecting the cards from the pupils by April 2013.

**Total Defence Day 2013**

Total Defence Day (15th February) marks the British surrender of Singapore to the Japanese at the end of World War 2 in 1942. This annual event reminds us that the task of nation-building is not easy, and that we must work to preserve our present prosperity and stability.

The theme for this year's campaign is "Will You Stand With Me?" This theme conveys the message that we are able to enjoy what we have in Singapore today because of the determination and hard work of generations of Singaporeans who have stuck together, overcoming many challenges along the way and bringing Singapore forward to what it is today. Thus, it is important to remind ourselves that as long as we remain united as one, we will succeed in building a secure and bright future for ourselves and the future generations.

The school will commemorate Total Defence Day with an assembly programme. In addition, the pupils will have more Social Studies, Art and Music lessons related to Total Defence. Through these activities, it is hoped that pupils in Frontier will feel that they too have a role to play in the defence of Singapore, despite their tender age.

Announcements

School address:
20 Jurong West Street 61
Singapore 648200

Phone:
65789555

E-mail:
frontier_ps@moe.edu.sg

Subscription to Young Scientist Magazine

The Young Scientist magazine's vendor will be coming to Frontier on 31 January and 1 February. Parents interested to subscribe to the Young Scientist magazine can fill up the subscription form which will be issued to all the pupils on 29 January. Please make payment to the vendor directly on 31 January or 1 February. For more information about the Young Scientist magazine you can refer to the following website for more details.

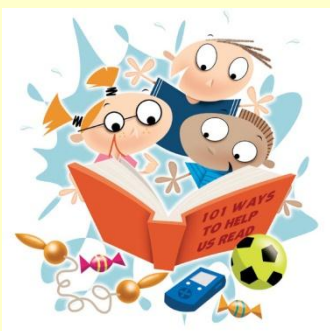
<http://www.youngscientistsreader.com.sg/>



Silent Reading

Pupils are required to bring a storybook daily during the silent reading period before the flag-raising ceremony. The language of the storybook to be brought is shown in the table below:

Day	Monday	Tuesday	Wednesday	Thursday	Friday
Language of storybook to bring	EL	EL	EL	MT	MT



Dental Clinic Operating Hours

The school dental clinic operating hours are as follows:

Monday & Wednesday: 8.00am – 5.30pm

Lunch Time: 1.00pm – 2.00pm

Tuesday, Thursday & Friday: Clinic Closed

(On duty at West Grove Pri Sch Dental Clinic)

For **Urgent Cases**, please call any of the following school dental clinics:

Dental clinic	Telephone	Address
West Grove Pri Sch	68969792	1 Jurong West St 72, (S649223)
Jurong West Pri Sch	67919700	30 Jurong West St 61, (S648368)
Xingnan Pri Sch	67935373	5 Jurong West St 91, (S649036)



Term 1 Calendar*

Week	Date	Event
0	2 Jan (W)	Start of Term 1
0	2 – 4 Jan	P1 Induction/ Aesthetic Week
0	4 Jan (F)	P1 Parents' Visit – Orientation
1	7 Jan (M)	Student Leadership training - 1/3
2	14 Jan (M)	Start of PAL for P2
4	21 Jan (M)	Start of Photography Enrichment for P1
4	1 Feb (F)	S-eLF-L.E.S.S. Training
5	7 Feb (Th)	Photo Taking Session for P1
5	8 Feb (F)	Chinese New Year Celebration
6	10-11 Feb	Chinese New Year
6	12 Feb (Tu)	Chinese New Year Off-in-Lieu
6	15 Feb (F)	Total Defence Day
7	20-22 Feb (W)	Class Photo Taking
10	15 Mar (F)	Learning Journey to the Zoo for P1; Changi Airport Learning Journey for P2
11	16-24 Mar	School Holiday

*Accurate as of 29 Jan 2013

----- ✂ please cut along this line ✂ -----

Acknowledgement of *In-Touch@Frontier* January 2013

I, parent of _____ of Primary _____,
acknowledge receipt and have noted the contents of this January issue of *In-Touch@Frontier*.

Name of Parent: _____

Signature and Date _____